

SIMULATION PREPARATION

LECTURE 7

CRISIS MAPPING AND DIGITAL HUMANITARIANISM MODULE

TEAMS

RUNNERS



- Always on the move
- Bringing task cards to card drop off/pick up areas
- Must follow card drop off schedule (e.g. bring card x to y drop off box at w time)

CRISIS MAPPERS



- Stationary in crisis mapping centre
- Receiving email notifications of events occurring on the field
- Enter notification details on crisis map

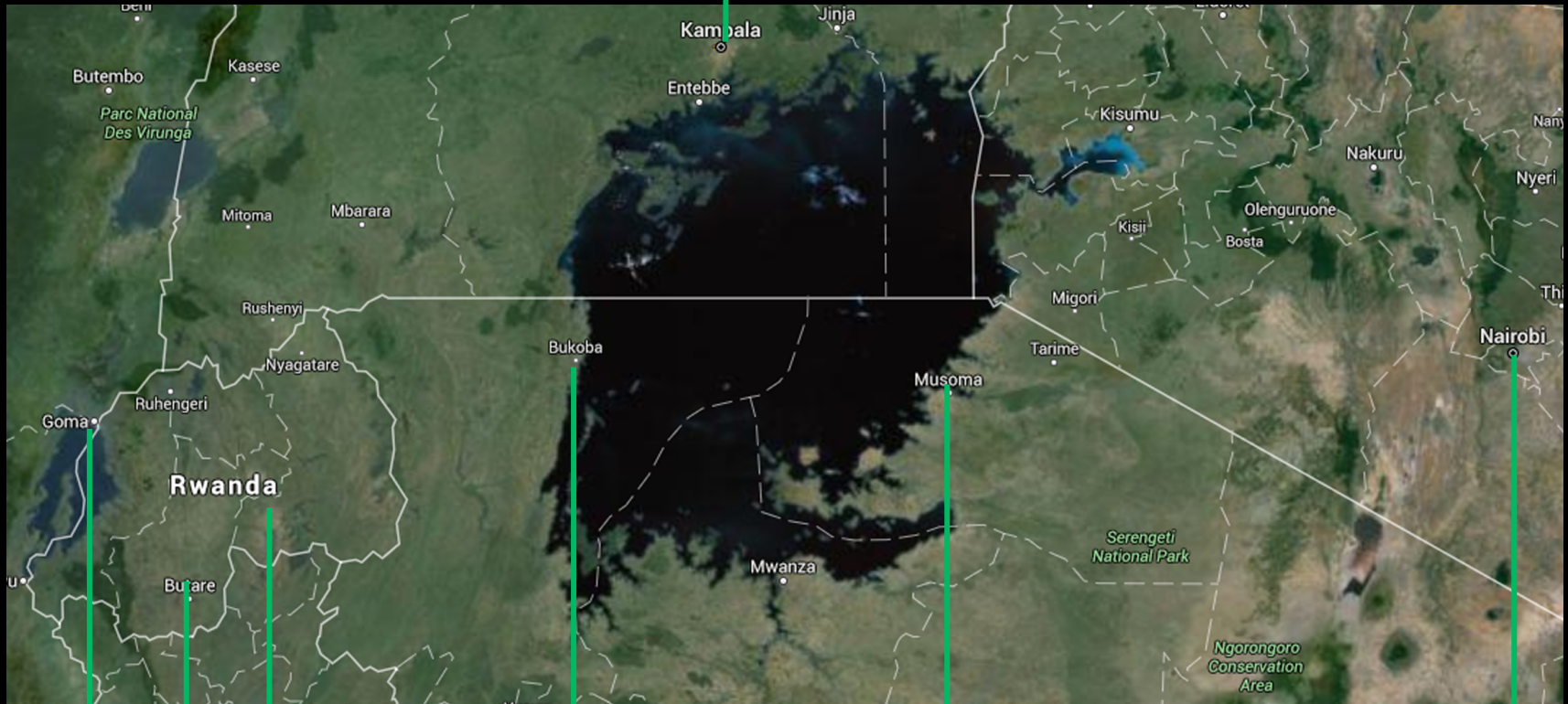
RESPONDERS



- Some are stationary, in crisis response centre
- Some are mobile, responding to crisis needs by picking up and dropping off task cards at various card drop off/pick up areas
- Communication between responders on the field and in the response centre is done via walkie-talkies

CRISIS SIMULATION AREA

Kampala
(Uganda)



Goma
(D.R.C.) (Rwanda)

Butare
(Rwanda)

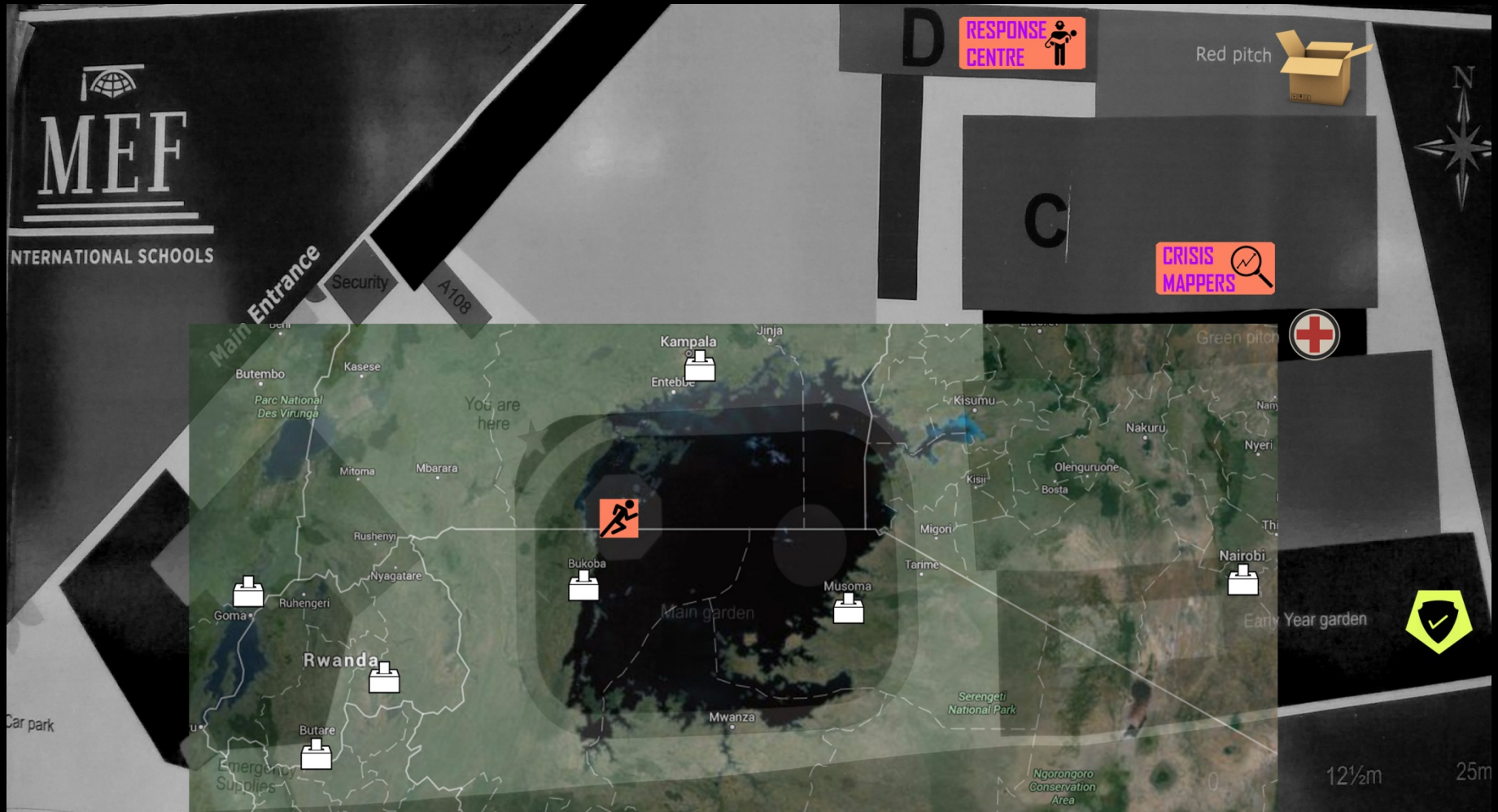
Kigali
(Rwanda)

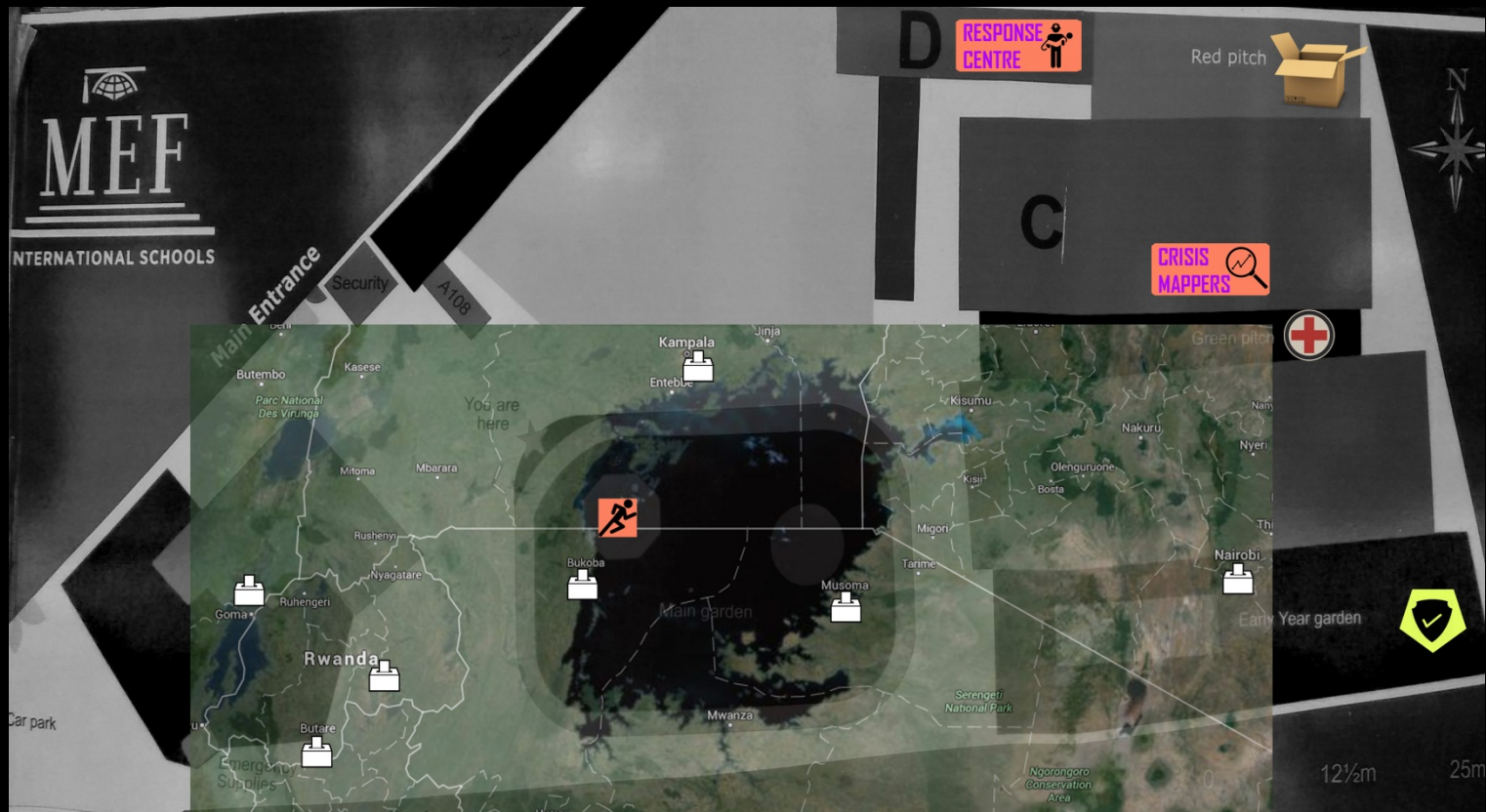
Bukoba
(Tanzania)

Musoma
(Tanzania)

Nairobi
(Kenya)

SIMULATION AREA + CAMPUS AREA





SUPPLIES → Tents, food packs, water purification tablets, rescue equipment, etc.



MEDICAL → Medicine, medical equipment, evacuation helicopter, etc.



SECURITY → Military convoy, police forces, U.N. peacekeepers, etc.

HOW THE SIMULATION TAKES PLACE

Runners have:

- List of time-coded card drop off/pick up times
- Stack of task cards
- Simulation area map

Responsibilities:

- Drop off specific task cards in the trays of drop off/pick up stations
- Must follow the schedule that is given to them



Crisis mappers have:

- Computer
- Logged into email
- Logged into Crowdmap dashboard

Responsibilities:

- Receive reports via email
- Enter the details on the central Crowdmap



Responders have:

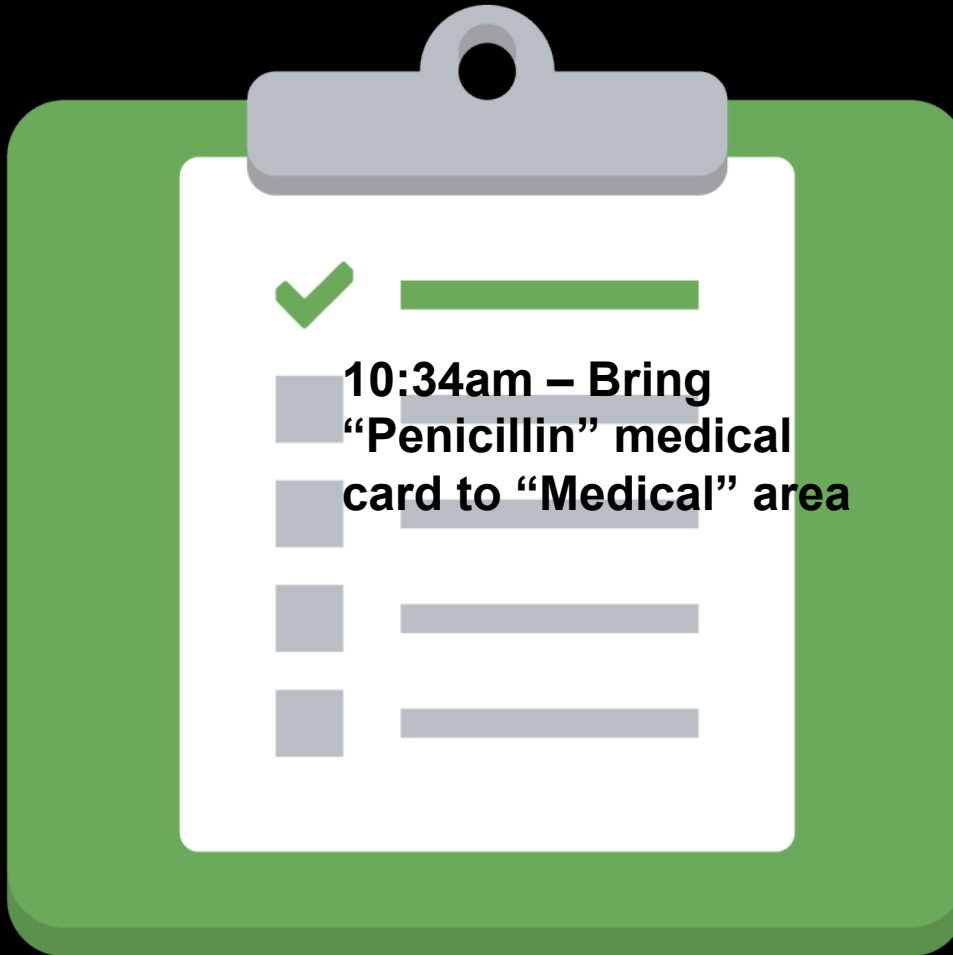
- Tablet
- Walkie-talkie
- Simulation area map

Responsibilities:

- Monitor the Crowdmap to see newly-added reports
- Coordinate with field responders via walkie-talkie



EXAMPLE, step 1

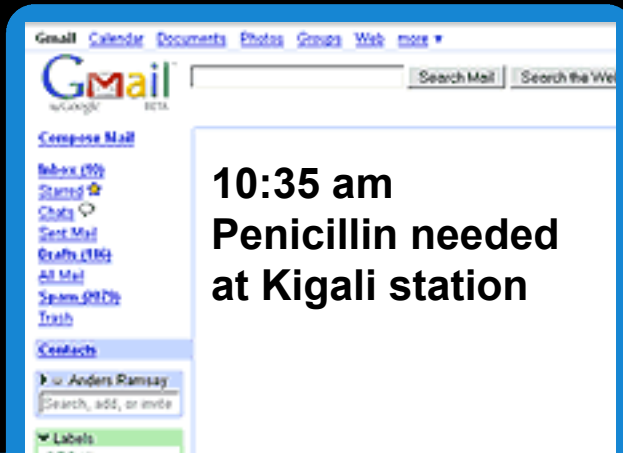


* Runners make sure the "Penicillin" medical card to the appropriate station ("Medical") at the appropriate time.

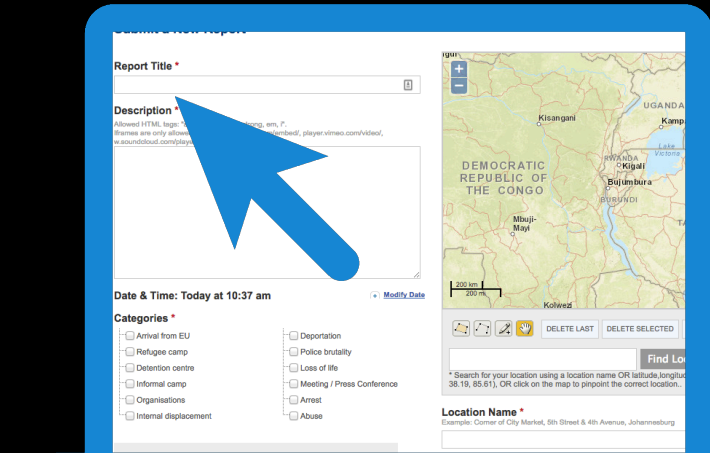
EXAMPLE, step 2



* Crisis mappers receive the email



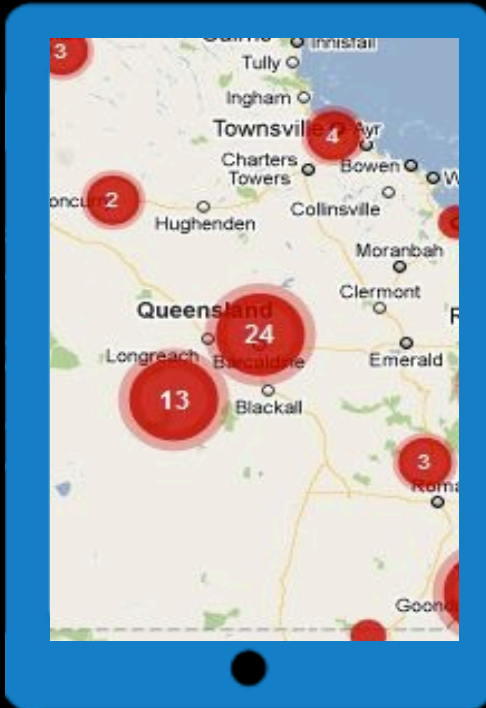
* Crisis mappers enter the information on the crisis map



EXAMPLE, step 3



* Responders in the response center monitor the Crowdmap, a new report is added at 10:37am



* Responders in the response center contact the response field workers



* Field responders go to the medical station, pick up the card and drop it off at the Kigali station

